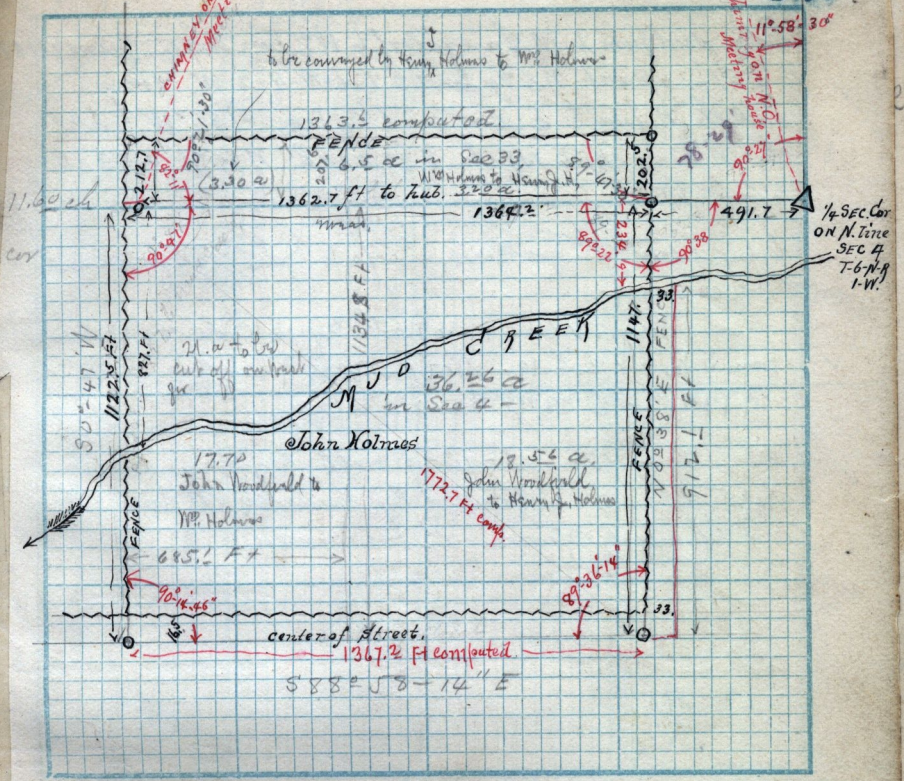


FEB-3-1890

37



Scale: See Field Book C - page 8 chains per inch 45

Survey for Wm Holmes in the N.W. 1/4 Sec. 4 T-6N-R-1-W

Albert Posterton } chainmen.  
Ear Wheeler }

deeds on pg. 40-41

Notes County Road Hot Springs to North Ogden.  
Surveyed Dec. 1889.